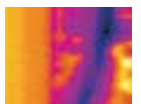
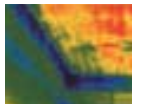


## ThermaCAM™ B4

Especially developed for the building industry  
Unparalleled image quality (320 x 240 pixels)



- HIGH THERMAL SENSITIVITY (0.08°C)
- EXTRAORDINARY IMAGE QUALITY (320 x 240 PIXELS)
- USEFUL BUILDING FEATURES INCORPORATED
- SOUND AND COLOR ALARMS
- WIDE-RANGE OF LENSES AND ACCESSORIES
- THERMACAM QUICKVIEW™ SOFTWARE INCLUDED
- COMPATIBLE WITH THERMACAM REPORTER™ AND THERMACAM IMAGE BUILDER™
- SPECIAL CALIBRATION FOR THE BUILDING INDUSTRY (-20°C +55°C)



**Infrared camera producing ultra-sharp images with all features for professional building inspections**



# ThermaCAM™ B4

## EASY AND QUICK BUILDING INSPECTIONS WITH THE THERMACAM B4

To meet the specific needs of the demanding building industry FLIR Systems has teamed up with professional and experienced building inspectors and has developed the ThermaCAM B4. The result is an infrared camera with unparalleled image quality (320 x 240 pixels), which has the features that are indispensable when doing infrared building inspections, and the necessary software to make professional inspection reports.

## POWERFUL FEATURES ESPECIALLY DEVELOPED FOR THE BUILDING INDUSTRY

- UNPARALLELED IMAGE QUALITY (320 x 240 PIXELS)
- AUTOMATIC DEW POINT IDENTIFICATION ALARM - IN THE CAMERA, ON-SITE, NO SOFTWARE NEEDED
- SOUND AND COLOR ALARMS
- LASER LOCATIR
- ESPECIALLY CALIBRATED FOR THE BUILDING INDUSTRY (-20 °C UP TO +55 °C)

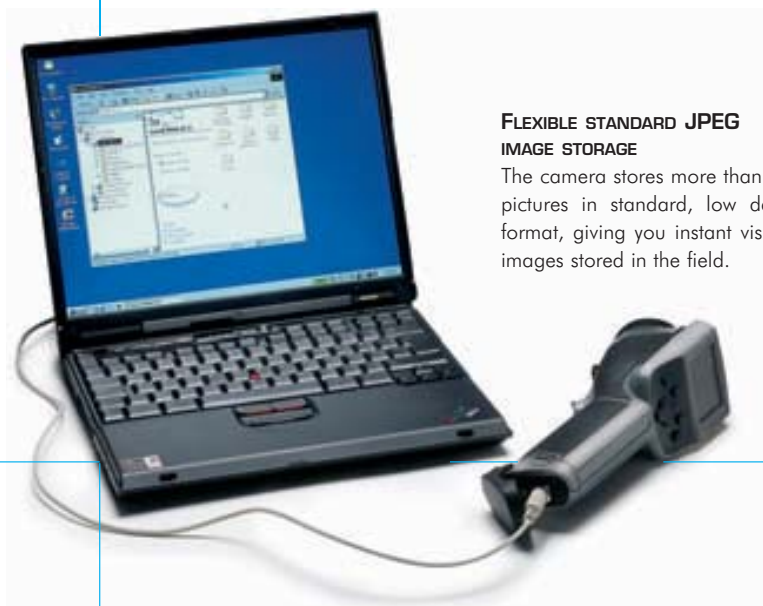


## ADAPTABLE TO THE MOST CHALLENGING SITUATION THANKS TO A WIDE RANGE OF ACCESSORIES

The ThermaCAM B4 is designed with a 25° lens, which is suitable for a majority of building applications. Interchangeable optics offer the building thermographer the flexibility to adapt his infrared camera to the most demanding building applications.

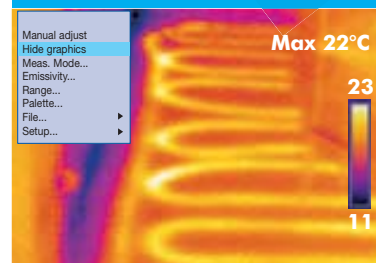
## FLEXIBLE STANDARD JPEG IMAGE STORAGE

The camera stores more than 80 infrared pictures in standard, low density JPEG format, giving you instant visibility of the images stored in the field.



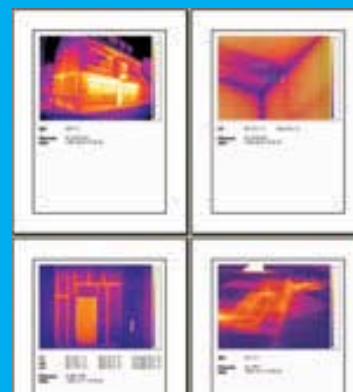
## EASY OPERATION

At the touch of a button you can easily change color palettes, emissivity settings, temperature ranges and other analysis tools. Built-in menu systems provide easy access to advanced yet simple to use software.



## LOCATE AND ANALYZE PROBLEMS FAST

Analyze problems and share results with your colleagues in the field. Movable crosshairs allow you to measure and analyze the temperature at a single point. Find the hottest spot in a defined area, highlight areas of concern with color or sound alarms. The ThermaCAM B4 has all the analysis tools you need to make instant building decisions in the field.



## THERMACAM QUICKVIEW™ BASIC REPORTING SOFTWARE INCLUDED

The ThermaCAM B4 comes with the ThermaCAM QuickView software included. This allows you to do basic post-analysis of your captured IR images and to make simple reports in a PDF-format.





## TECHNICAL SPECIFICATIONS

**FLIR SYSTEMS AB**  
 World Wide Thermography Center  
 Rinkebyvägen 19 - PO Box 3  
 SE-182 11 Danderyd  
 Sweden  
 Tel.: +46 (0)8 753 25 00  
 Fax: +46 (0)8 753 23 64  
 e-mail: sales@flir.se  
 www.flir.com

**FLIR SYSTEMS LTD.**  
 United Kingdom  
 Tel.: +44 (0)1732 220 011  
 e-mail: sales@flir.uk.com

**FLIR SYSTEMS Co. LTD.**  
 Hong Kong  
 Tel.: +852 27 92 89 55  
 e-mail: flir@flir.com.hk

**FLIR SYSTEMS GmbH**  
 Germany  
 Tel.: +49 (0)69 95 00 900  
 e-mail: info@flir.de

**FLIR SYSTEMS SARL**  
 France  
 Tel.: +33 (0)1 41 33 97 97  
 e-mail: info@flir.fr


**FLIR SYSTEMS S.r.l.**  
 Italy  
 Tel.: +39 02 99 45 10 01  
 e-mail: info@flir.it

**FLIR SYSTEMS AB**  
 Belgium  
 Tel.: +32 (0)3 287 87 10  
 e-mail: info@flir.be

[WWW.FLIR.COM](http://WWW.FLIR.COM)



SPECIFICATIONS ARE SUBJECT TO  
 CHANGE WITHOUT NOTICE  
 ©Copyright 2005, FLIR Systems, Inc.  
 All other brand and product names are  
 trademarks of their respective owners

<b>IMAGING PERFORMANCE</b>		
Field of view/min focus distance	25° x 19°/0.3 m	
Thermal sensitivity	0.08°C at 30°C	
Image frequency	25/30 Hz non-interlaced	
Focus	Manual	
Detector type	Focal Plane Array (FPA), uncooled microbolometer	
Spectral range	320 x 240 pixels	
Digital zoom	7.5 to 13 µm	
	1x, 2x or 4x	
<b>IMAGE PRESENTATION</b>		
Video output	PAL or NTSC, standard RCA composite video	
External display	2.5" color LCD, 16K colors	
<b>MEASUREMENT</b>		
Temperature range	-20°C to +55°C	
Accuracy	±2°C, ±2%	
Repeatability	±1°C, ±1%	
Measurement mode	3 movable spots, area max, area min, area avg, dew-point alarm color and/or sound alarm above or below	
Menu controls	Palettes (iron, rainbow, rainbow HC, B&W, B&W inverse), auto-adjust (continuous/manual)	
Set-up controls	Date/time, temperature units °C/°F, language, scale, info field, LCD intensity (high/normal/low)	
Measurement corrections	Emissivity variable from 0.1 to 1.0, reflected ambient	
<b>IMAGE STORAGE</b>		
Type	Built-in FLASH memory (> 80 images)	
File formats	Standard JPEG	
<b>LENSES (OPTIONAL)</b>		
2 x Telescope	15° x 11°/0.5 m	 <p>adapt your camera to EVERY situation</p>
0.5 Wide angle	45° x 36°/0.2 m	
<b>LASER LOCATOR™</b>		
Classification	Class 2	
Type	Semiconductor AlGaInP Diode Laser: 1mW/635 nm red	
<b>BATTERY SYSTEM</b>		
Type	Li-Ion, rechargeable, field replaceable	
Operating time	2 hours continuous operation. Display shows battery status	
Charging system	In camera, AC adapter or 12 V from car (with optional Std. cable) 2 bay intelligent charger, 12 V (optional)	
AC operation	AC adapter 90-260 V AC, 50/60 Hz, 12 V DC out	
Voltage	11-16 V DC	
Power saving	Automatic shutdown and sleep mode (user selectable)	
<b>ENVIRONMENTAL SPECIFICATION</b>		
Operating temperature range	-15°C to +45°C	
Storage temperature range	-40°C to +70°C	
Humidity	Operating and storage 20% to 80%, non-condensing	
Encapsulation	IP54, IEC 359	
Shock	Operational: 25G, IEC 68-2-29	
Vibration	Operational: 2G, IEC 68-2-6	
<b>PHYSICAL CHARACTERISTICS</b>		
Weight	< 800 g, incl. battery with 25° lens	
Size	272 mm x 80 mm x 105 mm	
Tripod Mounting	1/4" - 20	
Cover case	Plastic and rubber	
<b>INTERFACES</b>		
USB	Image transfer to PC	
RS-232 cable (optional)	Image transfer to PC	
Video Output	Standard RCA composite video	
<b>THERMACAM™ B4 INCLUDES:</b>	IR camera, Carrying case, Power supply, Handstrap, Lens cap, ThermoCAM Quickview™ Software, USB cable, User manual, Power cord, Battery	